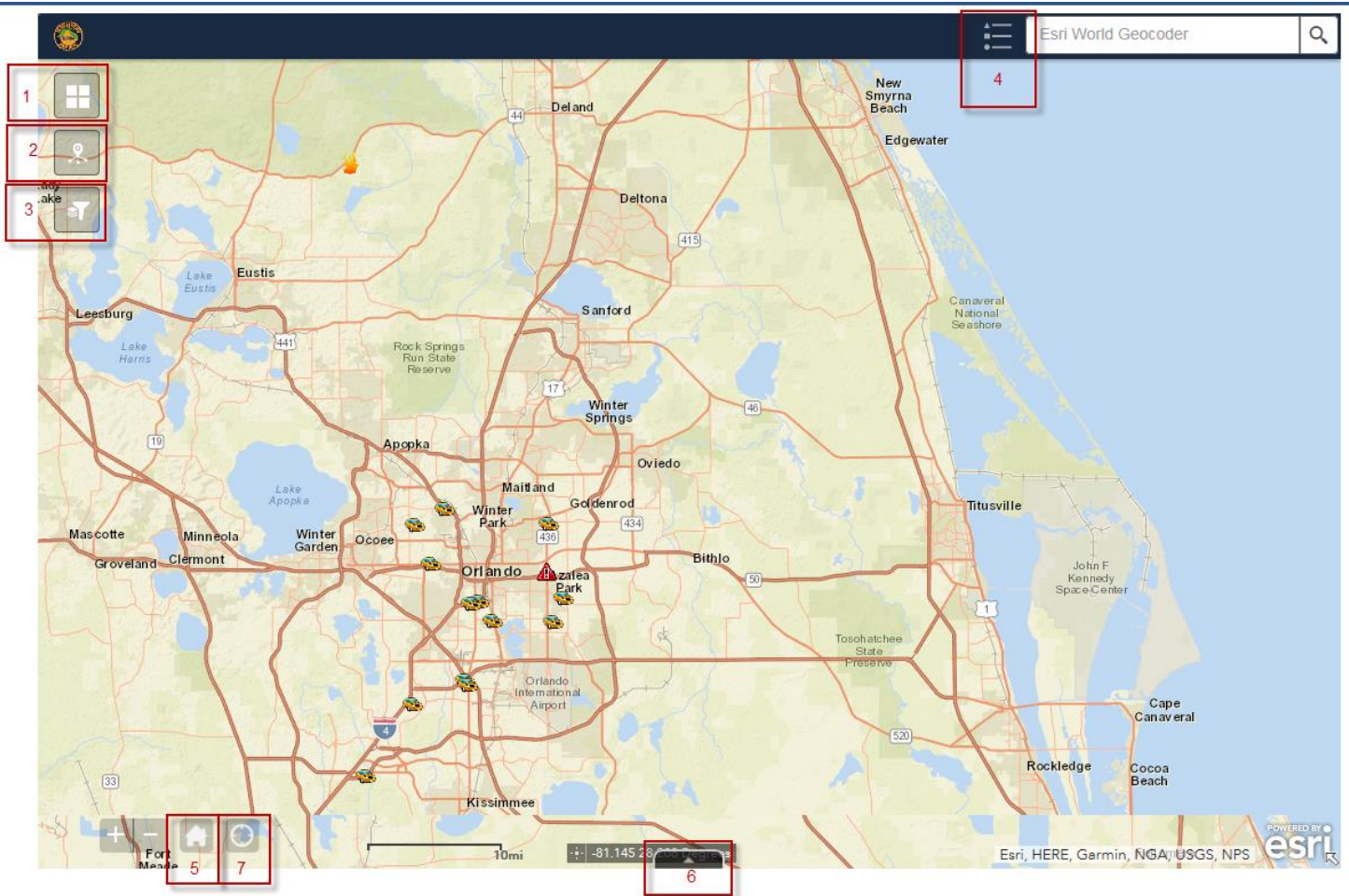









Quick Steps to access the new traffic site



Reports are updated every five minutes. All reports are troop level reports, even when selected by county. **Please note that when “filter by county” is applied, only counties with active incidents will be available for selection.** Please view the table below for button overview.

ICON	TITLE	DESCRIPTION
1	 Base Map Gallery	Allows users to select a different base map from a preset group which changes the look of the underlying map.
2	 Incident Summary	Provides an overview of the incidents to include the number of each, the type of incident, and the location. The summary will change based on the zoom level of the map.
3	 Filter	Allows users to filter the map by either the county or dispatch center from which the call originated. The map will zoom to the selected filter option. To go back to the original map view, click the home button located near the bottom left of the map.
4	 Legend	Provides a detailed explanation of what each incident symbol means on the map.
5	 Home	This will reset the map to original settings, clearing all filters.
6	 Incident Table	An incident summary can be viewed by clicking the up arrow button located at the bottom middle of the map screen. This will open an incident table which will give detailed information on all incidents being viewed in the current map view. Under the Incident Table, the tabs at the top can be used to view incidents under a particular incident type.
7	 My Location	Allows the map to use the location of your internet connection or mobile device to zoom map.

- Item 1 will allow the user to select a different base map
- Item 2 provides an incident summary of what is being viewed on the map – From here, users can hit the drop down arrow to quickly select an incident on the map. The incident will highlight and detailed information will appear.

The image shows two overlapping UI components. On the left is the 'Incident Summary' panel, which lists various incident types with their respective counts. On the right is a 'Vehicle Accident: ORCC' detail popup window showing specific incident information.

Icon	Category	Count
	Fire	1
	Travel Advisory	0
	Disabled Vehicle	0
	Alerts	1
	Other Conditions	0
	Vehicle Fire	0
	Debris/Obstruction	0
	Vehicle Accident	13

DISPATCHCENTER	ORCC
INCIDENTid	ORCC17CAD017564
DATE	2017/02/15
TIME	08:48
AUTHOR	10
LAT	28.49
LON	-81.37
TYPEEVENT	ACCIDENT
COUNTY	ORANGE
LOCATION	ORANGE AVE S x[W HOLDEN AVE] [ORLANDO]
REMARKS	ROAD CLEAR

- Item 3 allows a user to filter for County and Dispatch center. The list will only populate the County or dispatch center if that center has an incident going on at that time. (Troop filter will be added at a later date).

The image shows the 'Map Filters' panel. It features a 'Select a Group to Filter' section with a gear icon. Below this, there are two dropdown menus. The first dropdown is set to 'Dispatch Center' and is expanded to show 'County' and 'Dispatch Center' as options. The second dropdown is currently empty.

- Item 4 is a map legend that explains what each map symbol means
- Item 5 is a home button – it will revert the map back to the original default view and clear all filters

- Item 6 is the incident table button; this will allow users to view the active incidents that are in the map view. This table is now set to open when the traffic page is visited. You can use the arrow to hide the table if it is not needed. Use the tabs across the top of the table to view each incident type.

DISPATCHCENTE	INCIDENTId	DATE	TIME	AUTHOR	LAT	LON	TYPEEVENT	COUNTY	LOCATION	REMARKS
TBRC	TBRC17CAD0241	2017/02/15	09:55	10	28.43	-82.28	ACCIDENT	PASCO	I-75SB [MM294] x[MM294] [DADE CITY]	NO ROADBLOCK
ORCC	ORCC17CAD017	2017/02/15	10:54	10	29.02	-81.22	ACCIDENT	VOLUSIA	E NEW YORK AVE [3100] x [DELAND CROSSINGS BLVD] [DELAND]	NO ROADBLOCK
ORCC	ORCC17CAD017	2017/02/15	11:13	10	28.54	-81.74	ACCIDENT	LAKE	2110 S US-27 [X2[SR-25]] x[SR-25] [CLERMONT]	NO ROADBLOCK
TBRC	TBRC17CAD0241	2017/02/15	09:48	10	28.10	-82.01	ACCIDENT	POLK	N GALLOWAY	ROAD CLEAR

20 features 0 selected

- Item 7 is the “my location” button – a user can click on this to allow the web site to use your device’s location in an attempt to zoom the map for your surroundings.
- A pop up box will appear in the lower right corner of the map if you leave the page or refresh the page. Clicking it will bring the user back to the view you were using.

