

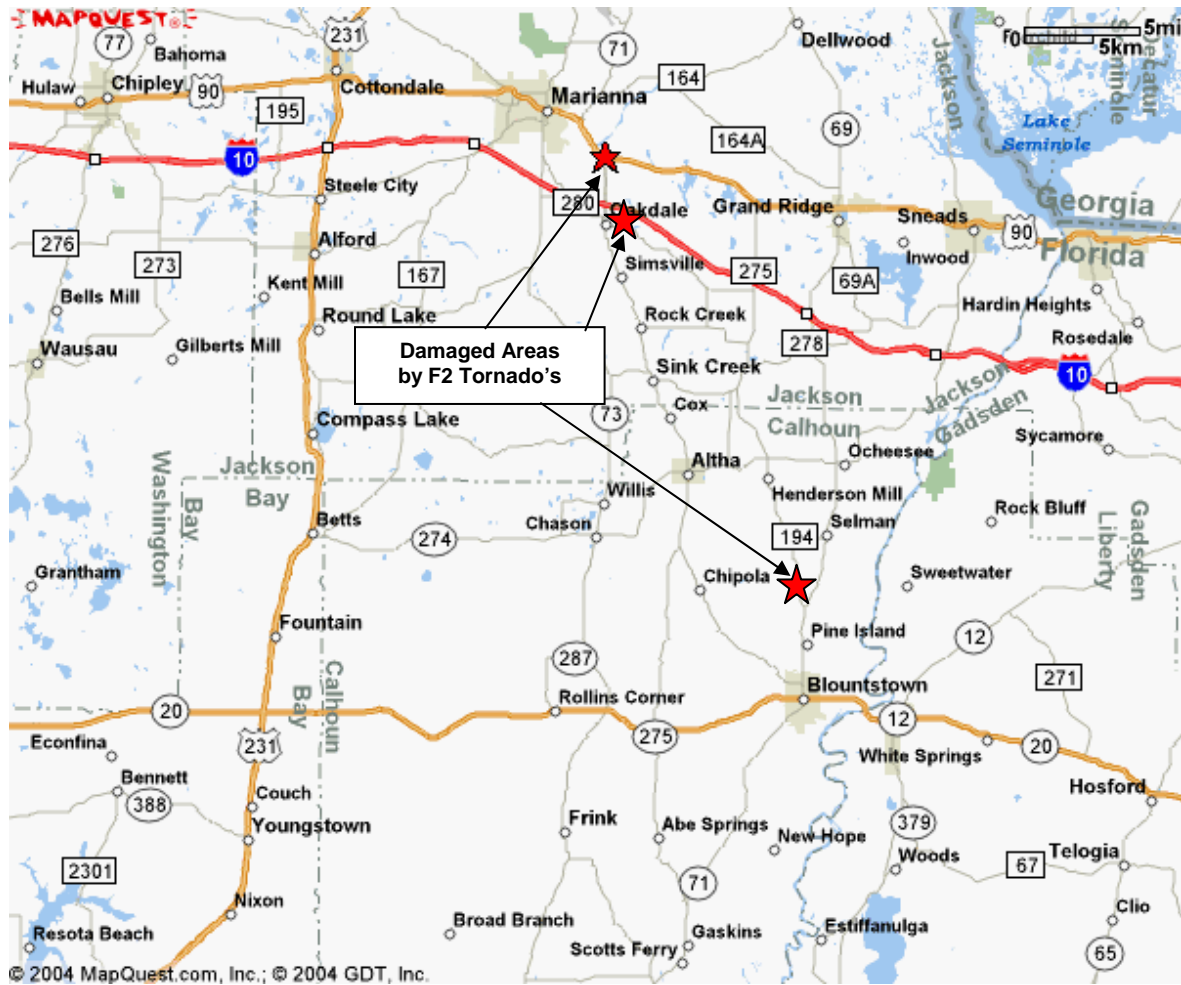
**MOBILE/MANUFACTURED HOME
DAMAGE ASSESSMENT FROM
TORNADO THAT HIT IN CALHOUN
AND JACKSON COUNTIES**



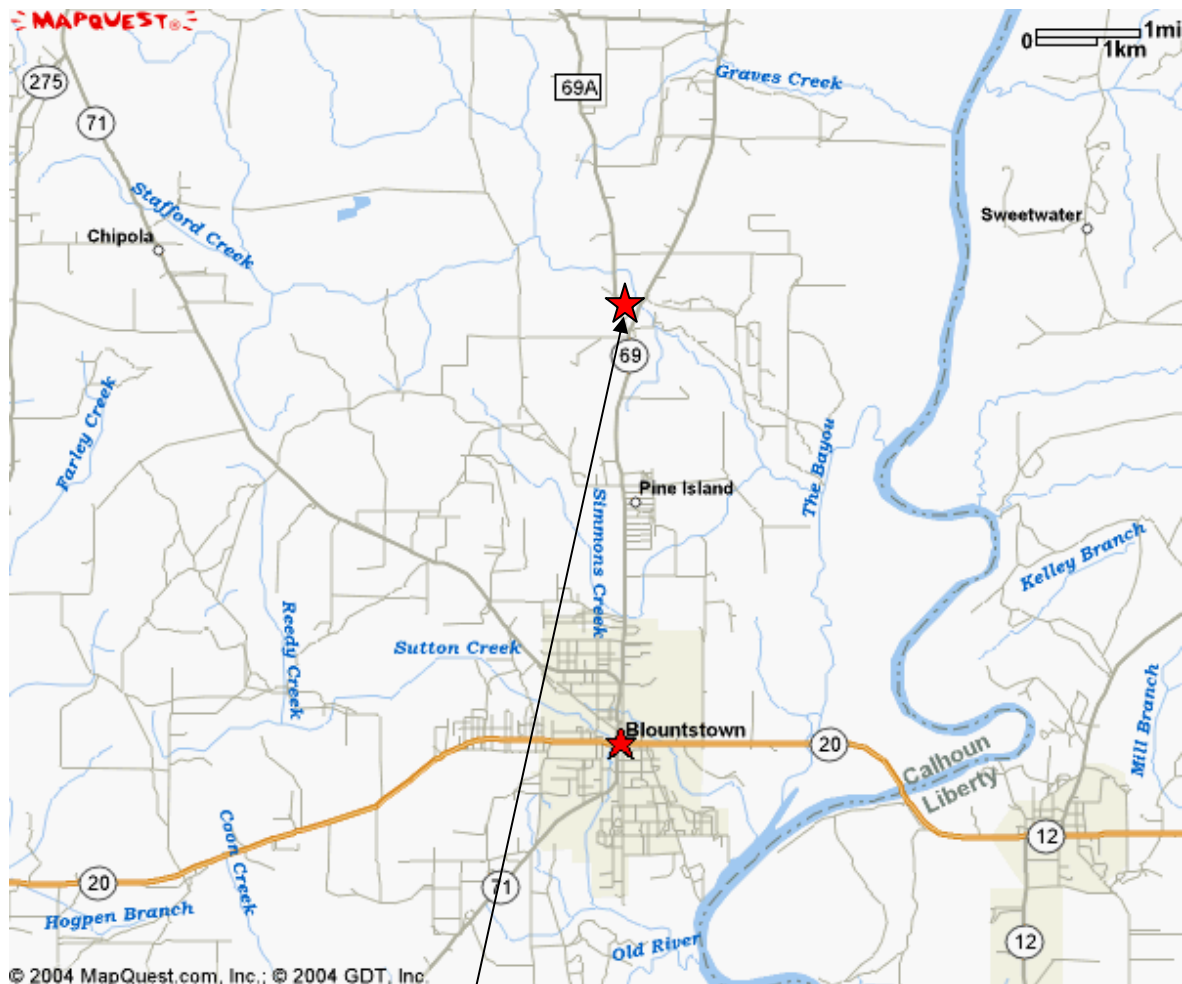
**DEPARTMENT OF HIGHWAY SAFETY AND
MOTOR VEHICLES
DIVISION OF MOTOR VEHICLES
BUREAU OF MH/RV CONSTRUCTION**

SEPTEMBER 2004

FIGURE 1
DAMAGED AREAS NEAR MARIANNA AND CHIPOLA

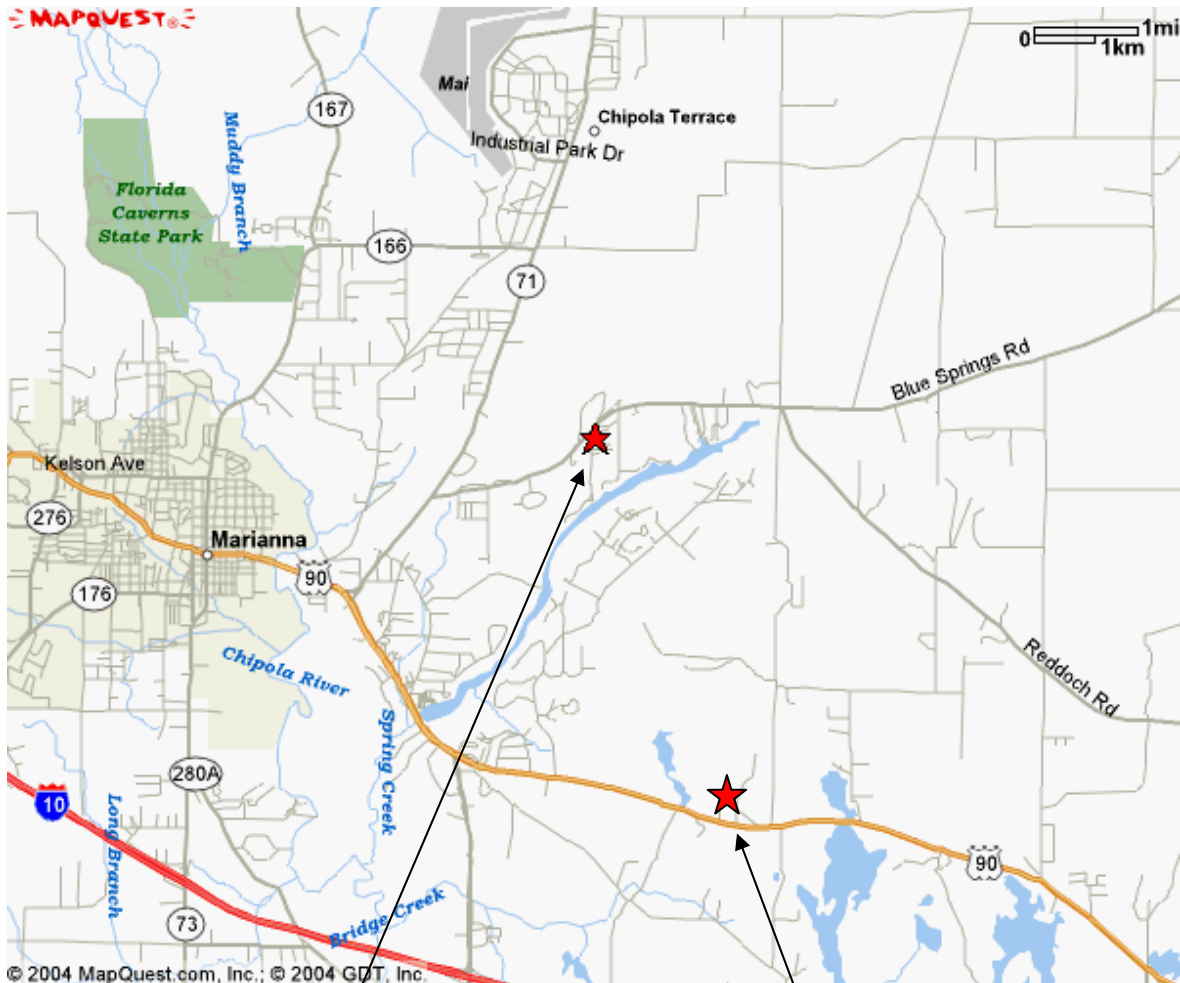


**FIGURE 2:
WHERE THREE HOMES WERE COMPLETELY DESTROYED**



Highway 69A on Private Property
3 Homes Completely Destroyed

**FIGURE 3:
THE LOCATION OF SPRING SIDE ESTATES AND
BLUE SPRINGS MOBILE HOME PARK AND
WOODLAND ESTATES MOBILE HOME PARK**



Spring Side Estates and Blue Springs Mobile Home Park
 5164 Copper Lane
 35 Homes Damaged
 10 Destroyed
 1970's through the late 1990's

Woodland Estates MH Park
 2420 Brogdan Lane
 12 Homes Total
 5 Destroyed
 2 By Falling Trees
 Most Homes were 1970's



Woodland Estates

**This home moved several feet from its foundation.
It had five frame ties each side.
Strapping broke where it wrapped around I-beam.
The perimeter floor joist was rotten.**





Woodland Estates

**This home has rotted floor joists.
The tie-down straps broke at sharp edges of
I-beam.**



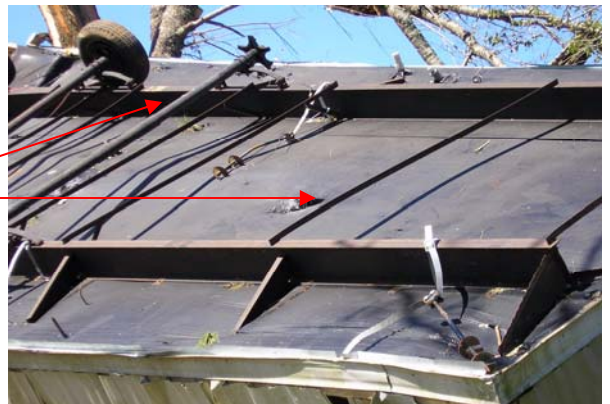


SpringSide Estates – Marianna

This is a 1970's home with 5 frame ties installed on each side and 3 over the roof ties.

There was 30 inch long anchors pulled out of the ground and are still attached to the I-beams.

This home was picked up and thrown 30 feet into a large oak tree that stopped the home from rolling across the road.





SpringSide Estates – Marianna

This is a Late 1990's Home.
 It had sidewall frame ties 11 feet and 8 inches apart.
 It did not have longitudinal ties.
 The straps broke at buckle and where it wraps around I-beam.



Anchor pulled out of the ground.

The soil mark on shaft of anchor revealed that it was not installed to its full depth.



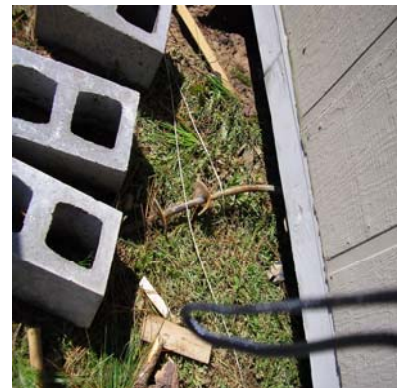


SpringSide Estates – Marianna

These early 1980's homes did not survive this F-2 Tornado.

There were 30-inch anchors installed on these homes.

Both homes shifted sideways before they were destroyed.





SpringSide Estates- Marianna

These homes actually traveled several feet before blowing apart.

All straps broke.

